

REGIONAL CLIMATE ACTION PRIORITIES WORKSHOP

Day 1, Climate Adaptation and Resilience
November 28, 2023



Goals for the day

- **Understand context for building resilience in Northeast Ohio**
 - Shared regional vision for the future
 - NOACA's regional Climate Risk and Vulnerability Assessment (CRVA)
 - Public engagement
 - Funding opportunities
- **Prioritize adaptation actions for the region**

Agenda

Morning Session

9:00 – 9:20 AM	Welcome
9:20 – 10:15 AM	Regional visioning warm-up activity
10:15 – 10:25 AM	Break
10:25 AM – 12:30 PM	Introduction to adaptation and NOACA's regional CRVA; small group discussions of CRVA results
12:30 – 1:00 PM	Lunch Break

Afternoon Session

1:00 – 1:40 PM	Presentation on adaptation funding, goals, and actions
1:40 – 3:55 PM	Ranking regional adaptation actions activity (includes a 10-minute break)
3:55 – 4:15 PM	Participant commitments and workshop close-out



What Is Visioning?

Helps communities define the resilient future they want

- What does the “ideal” future in this region look like?
- What do we value?

Touches on many community elements



Why Create a Vision?

- Helps us set common goals
- Inspires hope
- Generates creative thinking





Activity: Share Your Vision for the Region's Future

Divide into groups of four.

Each person will be assigned a number from 1 - 4 that corresponds with a numbered question

You're an interviewer – ask your question to the other three members of your group

1. What do you hope will be true about Northeast Ohio and surrounding areas in the future?

2. What about our region as it is today do you want to see preserved?

3. What about our region do you want to see improved, enhanced, or even created if it doesn't exist now?

4. Which stakeholders (national, state, regional, or local) do you think need to be in the room to advance resilience in Northeast Ohio?



1. What do you hope will be true about Northeast Ohio and surrounding areas in the future?
2. What about our region as it is today do you want to see preserved?
3. What about our region do you want to see improved, enhanced, or even created if it doesn't exist now?
4. Which stakeholders (national, state, regional, or local) do you think need to be in the room to advance resilience in Northeast Ohio?

Interview Matrix Worksheet

Your number: _____

Your Question

Interview 1: Responses

Interviewer

Interviewee

ROUND 1: 1-2, 3-4

ROUND 2: 2-3, 4-1

ROUND 3: 2-4, 3-1

ROUND 4: 3-2, 1-4

ROUND 5: 4-2, 1-3

ROUND 6: 2-1, 4-3

Reminder: first number is the **interviewer**, second is the **interviewee**!

ROUND 1: 1-2, 3-4

ROUND 2: 2-3, 4-1

ROUND 3: 2-4, 3-1

ROUND 4: 3-2, 1-4

ROUND 5: 4-2, 1-3

ROUND 6: 2-1, 4-3

Reminder: first number is the **interviewer**, second is the **interviewee**!

ROUND 1: 1-2, 3-4

ROUND 2: 2-3, 4-1

ROUND 3: 2-4, 3-1

ROUND 4: 3-2, 1-4

ROUND 5: 4-2, 1-3

ROUND 6: 2-1, 4-3

Reminder: first number is the interviewer, second is the interviewee!

ROUND 1: 1-2, 3-4

ROUND 2: 2-3, 4-1

ROUND 3: 2-4, 3-1

ROUND 4: 3-2, 1-4

ROUND 5: 4-2, 1-3

ROUND 6: 2-1, 4-3

Reminder: first number is the interviewer, second is the interviewee!

ROUND 1: 1-2, 3-4

ROUND 2: 2-3, 4-1

ROUND 3: 2-4, 3-1

ROUND 4: 3-2, 1-4

ROUND 5: 4-2, 1-3

ROUND 6: 2-1, 4-3

Reminder: first number is the interviewer, second is the interviewee!

ROUND 1: 1-2, 3-4

ROUND 2: 2-3, 4-1

ROUND 3: 2-4, 3-1

ROUND 4: 3-2, 1-4

ROUND 5: 4-2, 1-3

ROUND 6: 2-1, 4-3

What did you hear?

- All number 1's come together, all 2's come together, 3's and 4's.
- On flip charts identify:
 - Common themes
 - Outliers
 - Your own perspectives
- Facilitator presents key results/findings

Climate Change Is a “Today” Problem

Climate change made Quebec’s 2023 fire season **50% more intense**

 **Joe Romanish**
@Jrom1795

What it currently looks like vs. what it should look like. The wildfire smoke is so thick today. Smell is starting to make its way inside our apartment. [#Cleveland](#) [#wildfires](#) [#CanadianWildfires](#)

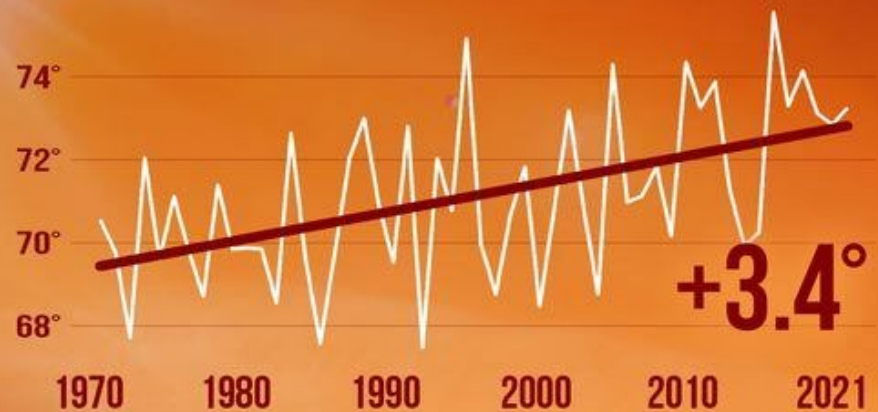


8:31 AM · Jun 28, 2023 · 2,319 Views

Current hazards are getting worse

CLEVELAND SUMMER WARMING

Average Summer Temperature



Annual average summer (June, July, August) temperature (°F).
Source: RCC-ACIS.org

CLIMATE CENTRAL



Image: 2003 Flooding in Gloria Glens - Source: Medina County EMA (All Hazard & Flood Mitigation Plan 2019 Medina County, OH)

2017-2022: The 5 most expensive hazard events (flooding, thunderstorms, wind) **alone** caused the region almost **\$42 million in damage**

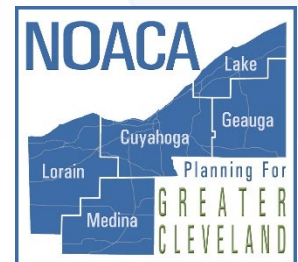
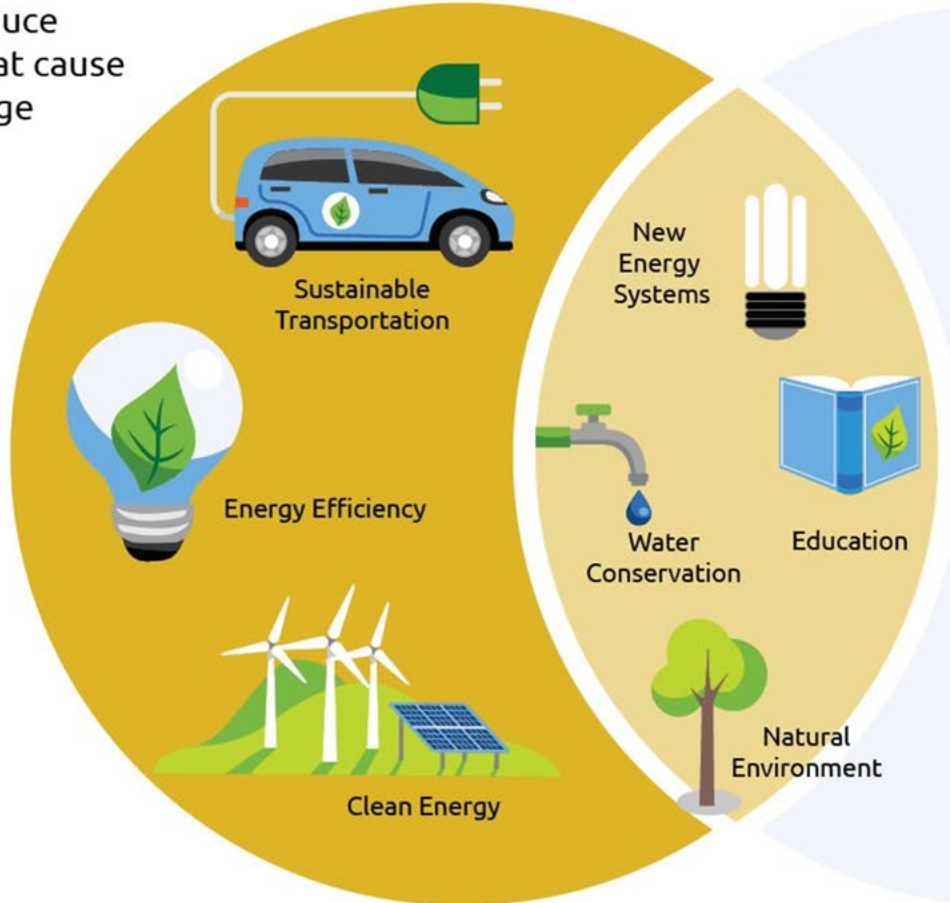


Image: Climate Matters, Summer Warming in Cleveland

Protecting Our Communities

Mitigation

Action to reduce emissions that cause climate change



Adaptation

Action to manage the risks of climate change impacts



Disaster Management & Business Continuity



Infrastructure Upgrades



Flood Protection

Adaptation vs Resilience

- **The two terms are often used interchangeably**
 - **Adaptation:** action to manage the risks caused by climate change
 - **Resilience:** often goes beyond climate – a “resilient community” is one that is strong in many ways

NOACA's Regional Climate Risk and Vulnerability Assessment (CRVA)



What is a Climate Risk and Vulnerability Assessment (CRVA)?

An assessment of the ways in which a community or region is susceptible to the impacts of climate change

How was NOACA's CRVA developed?

- NOACA-convened CRVA Working Group set the key parameters and direction of the CRVA
 - Team of stakeholders from the five counties with wide-ranging expertise in policy, infrastructure, health, emergency management, and conservation

How was NOACA's CRVA developed?

- NOACA-convened CRVA Working Group set the key parameters and direction of the CRVA
 - Team of stakeholders from the five counties with wide-ranging expertise in policy, infrastructure, health, emergency management, and conservation

Insights on the region's vulnerabilities to climate change



Best available research on current and future climate in the 5 counties



Public engagement across the 5 counties



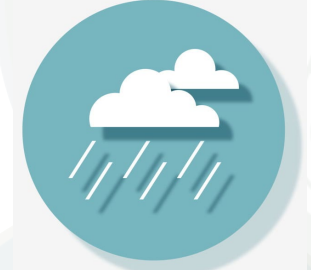
Focal Hazards

Chosen by the CRVA Working Group after review of data

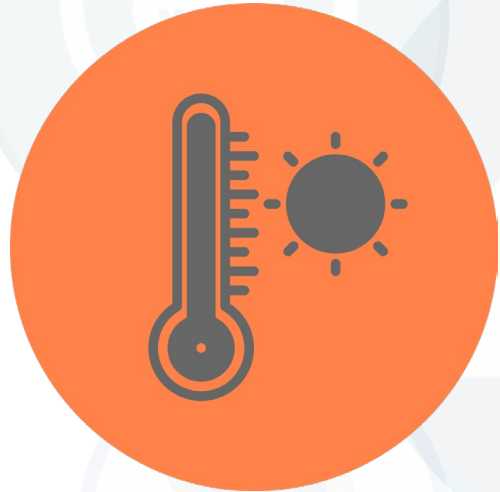
- Changing seasonal conditions
- ★ **Extreme heat**
- Drought
- Severe winter weather
- ★ **Heavy precipitation and flooding**
- ★ **Severe summer storms (thunderstorms, tornadoes, wind)**
- Impacts of climate change on Lake Erie

Community Systems

Foundational systems that keep our communities running & provide specific services



Hazard-System Pairings



Extreme Heat

- Health & wellness
- Energy systems
- Water & wastewater

Heavy Precip & Flooding

- Water & wastewater
- Transportation
- Ecological systems



Severe Summer Storms

- Health & wellness
- Energy systems
- Transportation

How Is Risk Assessed?

Risk = likelihood x consequence

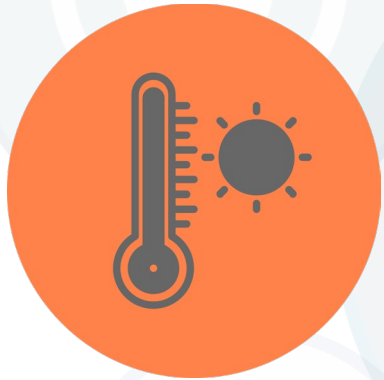
How likely is it that the hazard will occur?

Based on past occurrence, climate projections

What are the known or estimated consequences of the hazard?

Based on research, local experts, stakeholders

Summary: Risk Assessment Results



Extreme Heat
Health & wellness
Energy systems
Water & wastewater

HIGH

HIGH

MOD. HIGH



Heavy Precip & Flooding
Water & wastewater
Transportation
Ecological systems

HIGH

HIGH

MOD. HIGH



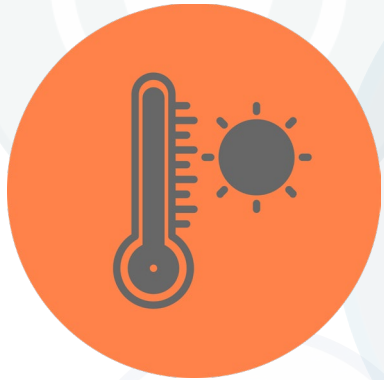
Severe Summer Storms
Health & wellness
Energy systems
Transportation

MOD. HIGH

MOD. HIGH

MOD. HIGH

Summary: Risk Assessment Results



Extreme Heat
Health & wellness
Energy systems
Water & wastewater

HIGH

HIGH

MOD. HIGH



Heavy Precip & Flooding
Water & wastewater
Transportation
Ecological systems

HIGH

HIGH

MOD. HIGH



Severe Summer Storms
Health & wellness
Energy systems
Transportation

MOD. HIGH

MOD. HIGH

MOD. HIGH



Air quality added
based on public
engagement

Public Outreach



A TOTAL OF 29
COMMUNITY
ENGAGEMENT
SESSIONS



2 WORKSHOPS



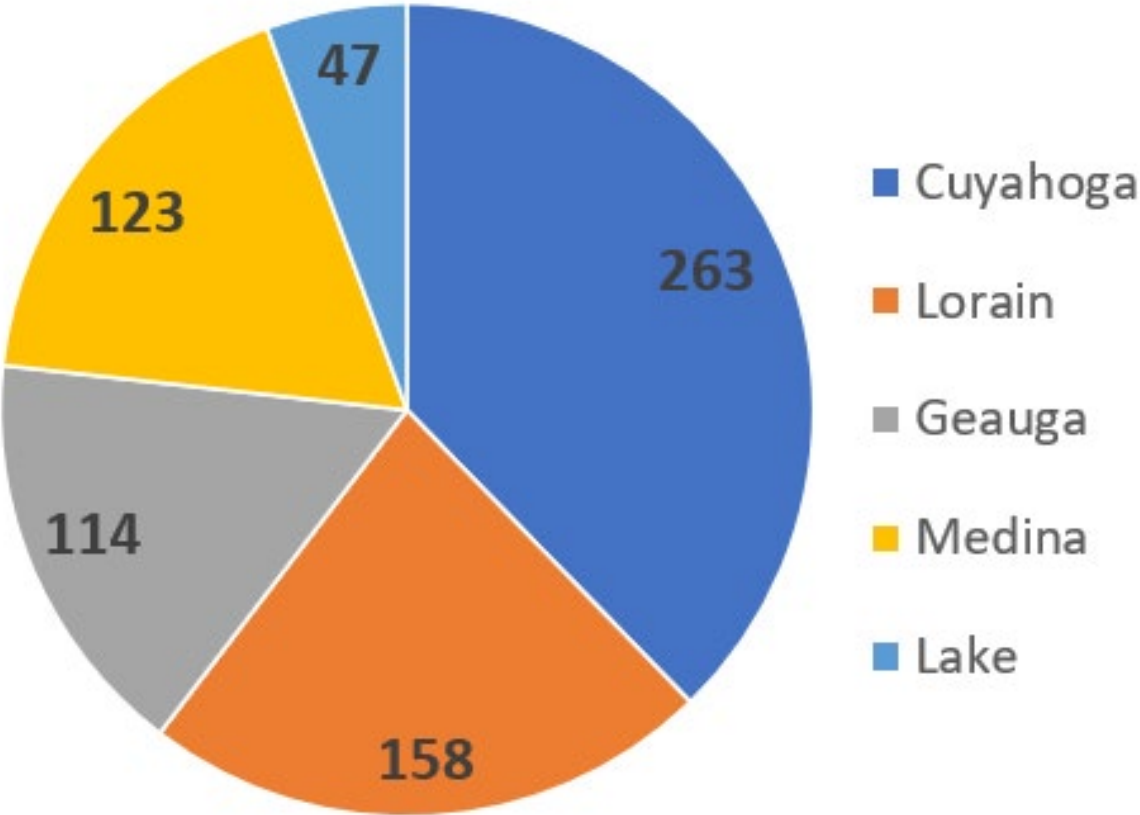
25 SESSIONS
COMPLETED



2 ADDITIONAL
SESSIONS
SCHEDULED FOR
LAKE COUNTY

Where We Met People

Participants by County





Some Themes We are Hearing From the 82% of Participants Who Are Supportive of Climate Action Planning

- **Extreme and unpredictable weather**
- **Air quality**
- **Concern about inaction**
- **Changing seasons/ impacts on trees and nature**
- **The future for the next generations**
- **Top three concerns among all respondents to focus group questionnaires:**
 - **Air Quality Issues/Pollution**
 - **Flooding**
 - **Extreme Heat**



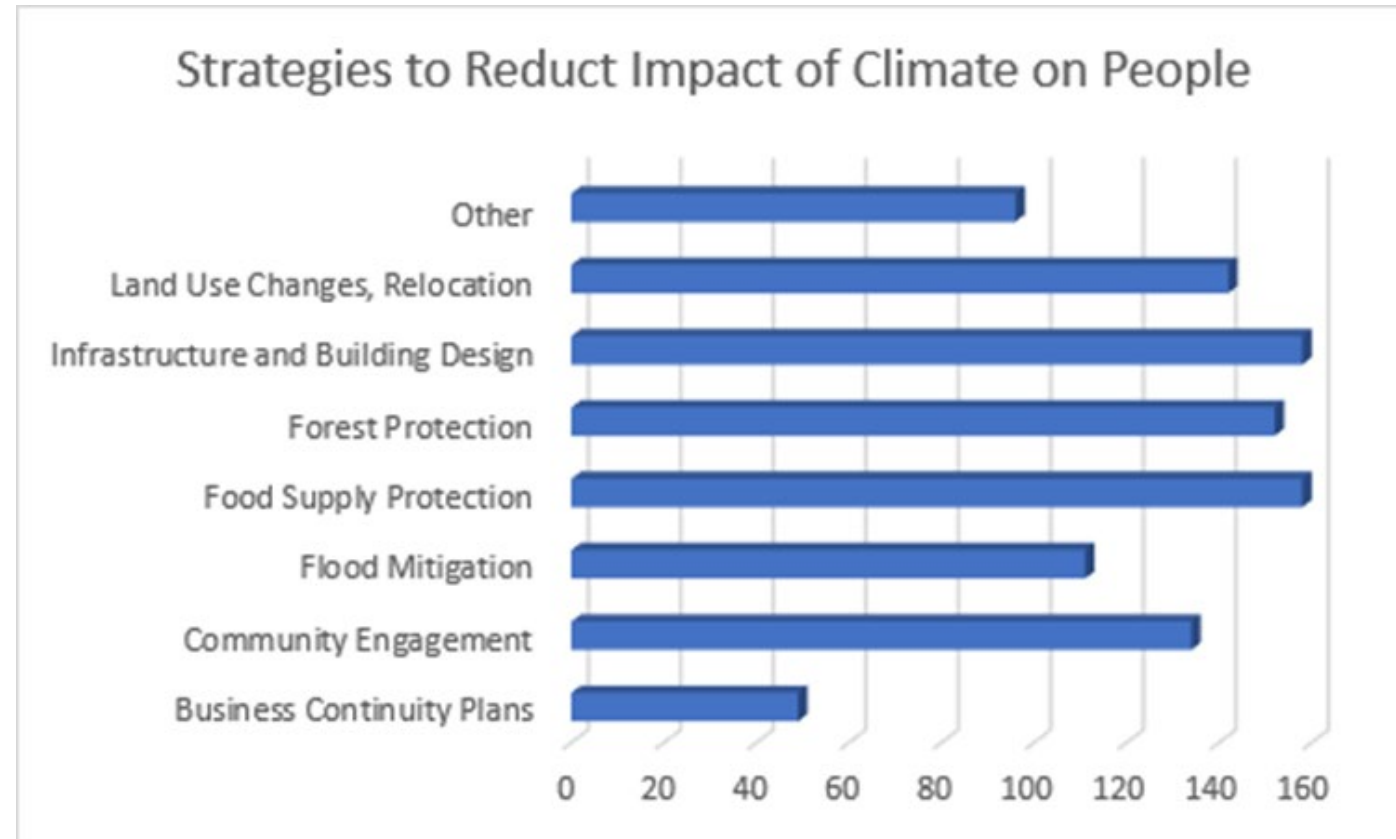
Some Themes We are Hearing from the 18% Who are Not Supportive of Climate Action Planning

- **The Climate is not changing**
- **Humans are not responsible for any changes, but instead we are witnessing natural weather variability**
- **NOACA is the problem and should not be involved in Climate Action Planning**

Focus Group Questionnaire Responses: Best Strategies to Reduce Impact of Climate on People

Question 6 Which three strategies to reduce the impact of climate on people are most important?

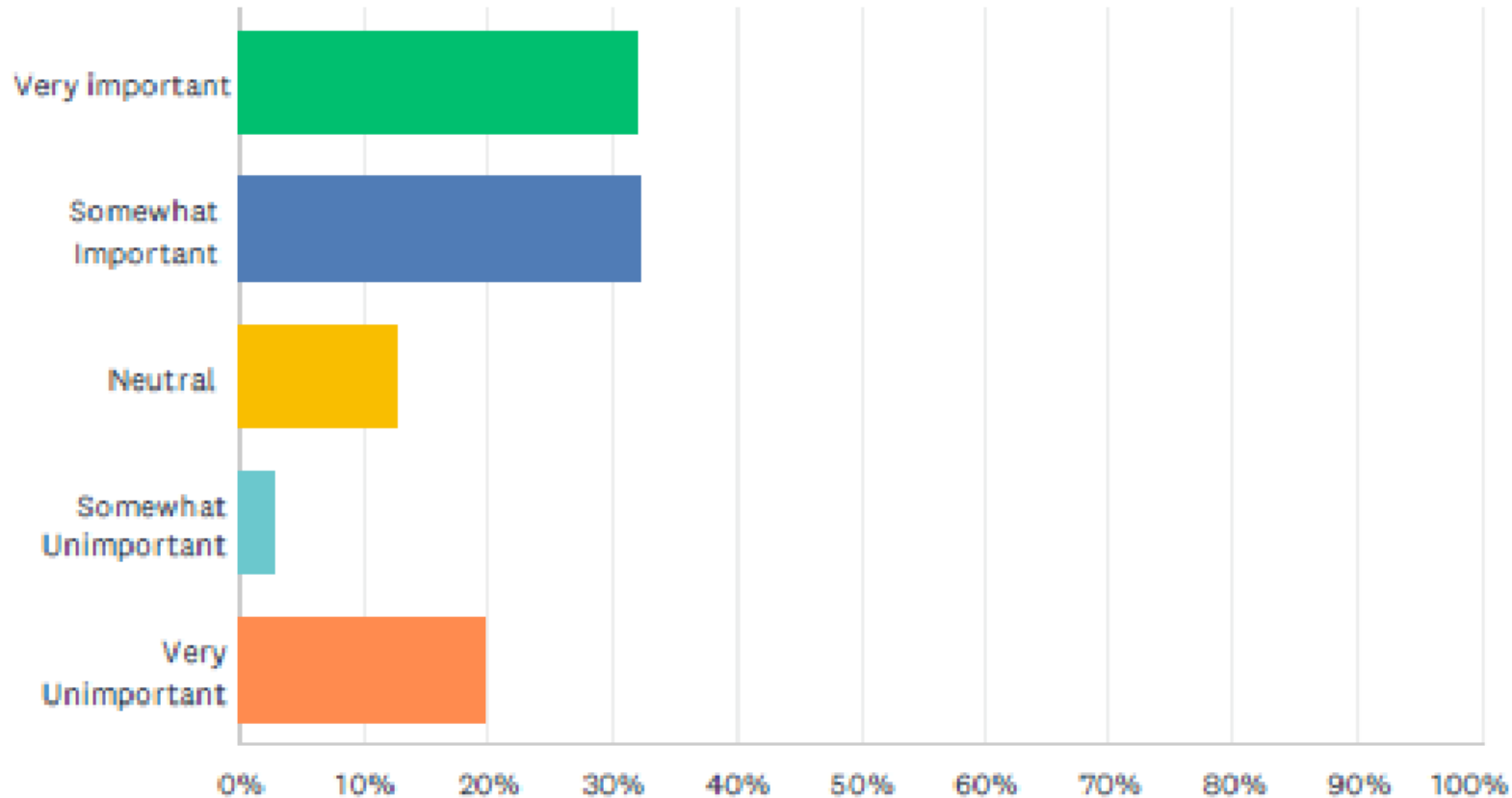
Business Continuity Plans	49
Community Engagement	134
Flood Mitigation	111
Food Supply Protection	158
Forest Protection	152
Infrastructure and Building Design	158
Land Use Changes, Relocation	142
Other	96



ONLINE INPUT RESPONSES

Q9 When you choose a place to live, how important is it to be in a green building?

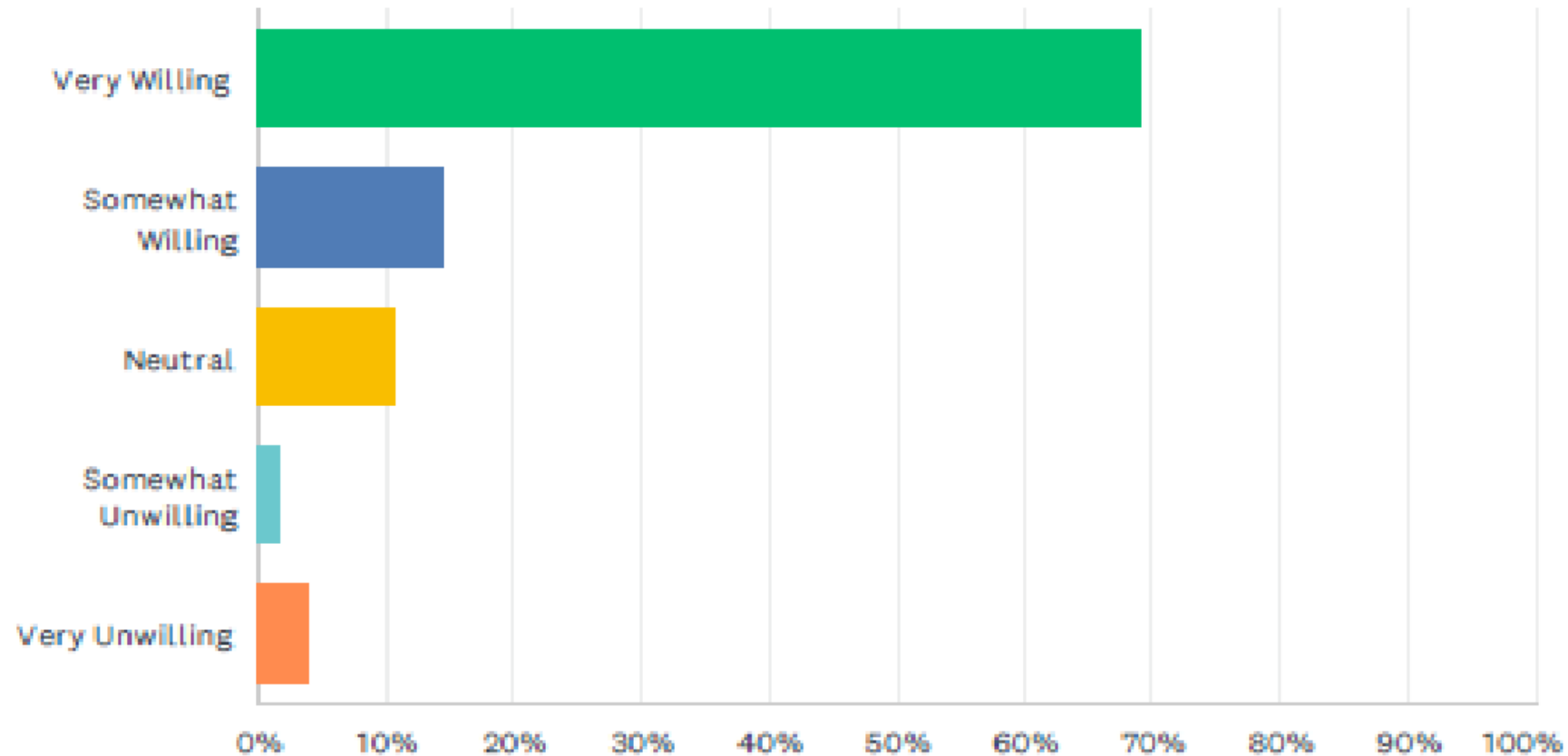
Answered: 297 Skipped: 29



ONLINE INPUT RESPONSES

Q19 Are you willing to plant a new tree or two on your property to help expand tree cover?

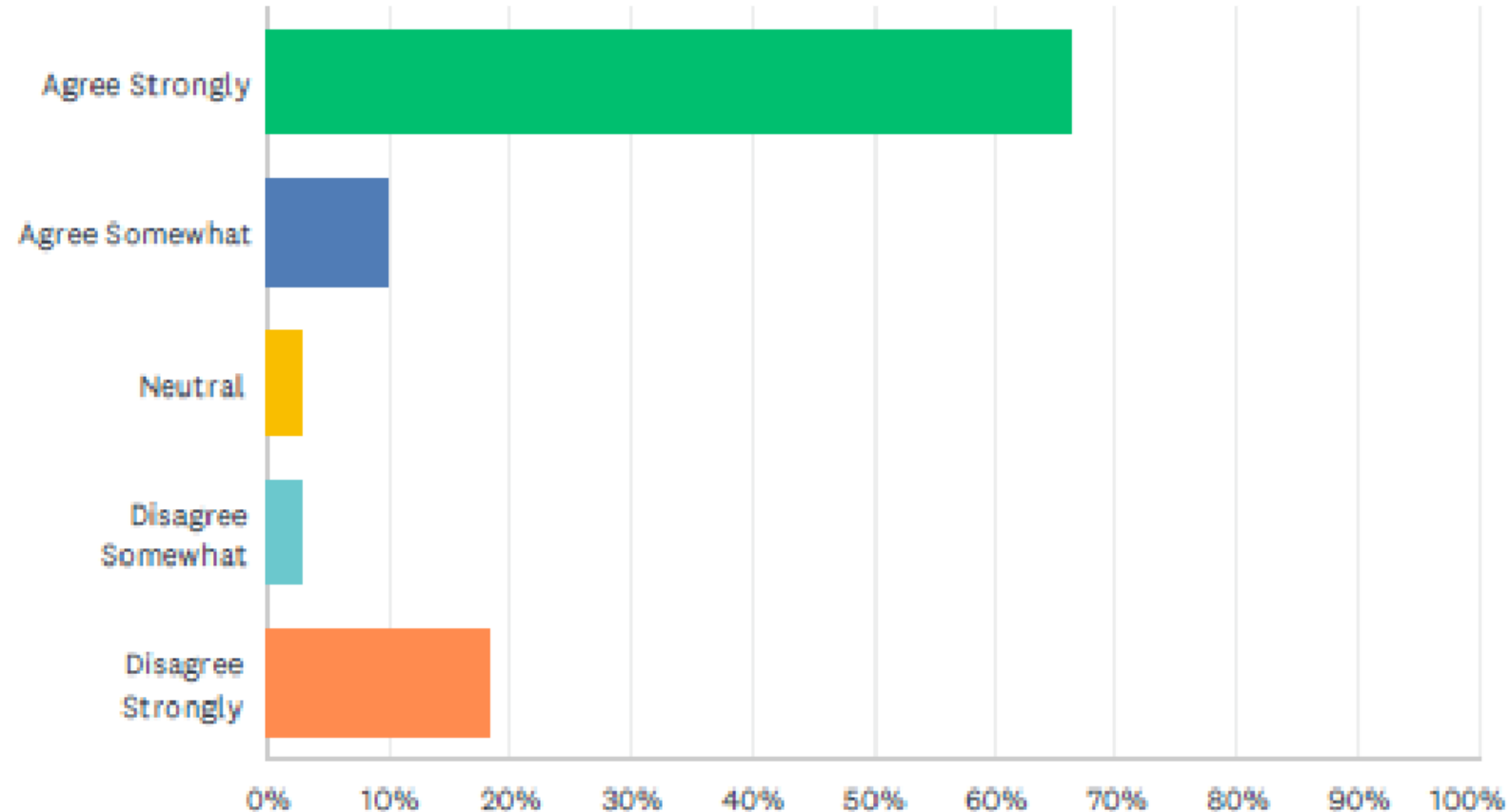
Answered: 300 Skipped: 26



ONLINE INPUT RESPONSES

Q20 Do you agree or disagree that climate change impacts your personal health?

Answered: 299 Skipped: 27



BACKGROUND

• CAP Outreach & Engagement: Climate Fresk Workshops



WANT TO LEARN ABOUT CLIMATE CHANGE AND HOW YOU GET INVOLVED?

JOIN US FOR

CLIMATE FRESK
All the cards are in your hands!

A COLLABORATIVE GAME TO TEACH YOU CLIMATE SCIENCE, AND HOW TO GET INVOLVED REGIONALLY

PRESENTED BY

NORTHEAST OHIO
Lake
Cuyahoga
Geauga
Lorain
Medina
AREAWIDE COORDINATING AGENCY
NOACA: Planning For Greater Cleveland

Climate In  Your Hands

GLOBALLY-RENOUNDED | SCIENCE-BASED

The flyer features a photograph of a group of people sitting around a table, engaged in a game. The table is covered with various cards and a small globe. The background is a warm, indoor setting with a brick wall and a window.

- Interactive, climate education workshop
- 3-hour, game-style format
- Consultant-led, with regional data and engagement content tailored to Northeast Ohio regional climate planning process



CITADEL IMPACT
CONSULTING

BACKGROUND

Climate Fresk Implementation

- Eight (8) workshops held Aug 14 -Sept 14
- Hosts included senior and family centers, metroparks, and CMHA housing complexes
- 63 total attendees
- 26 discussion surveys submitted



Madison Senior Center, Lake County

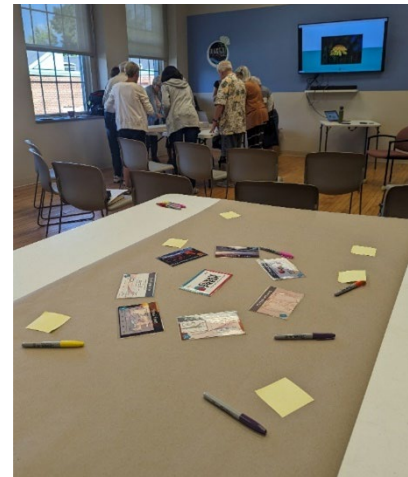


Lantern of Chagrin Valley,
Geauga County



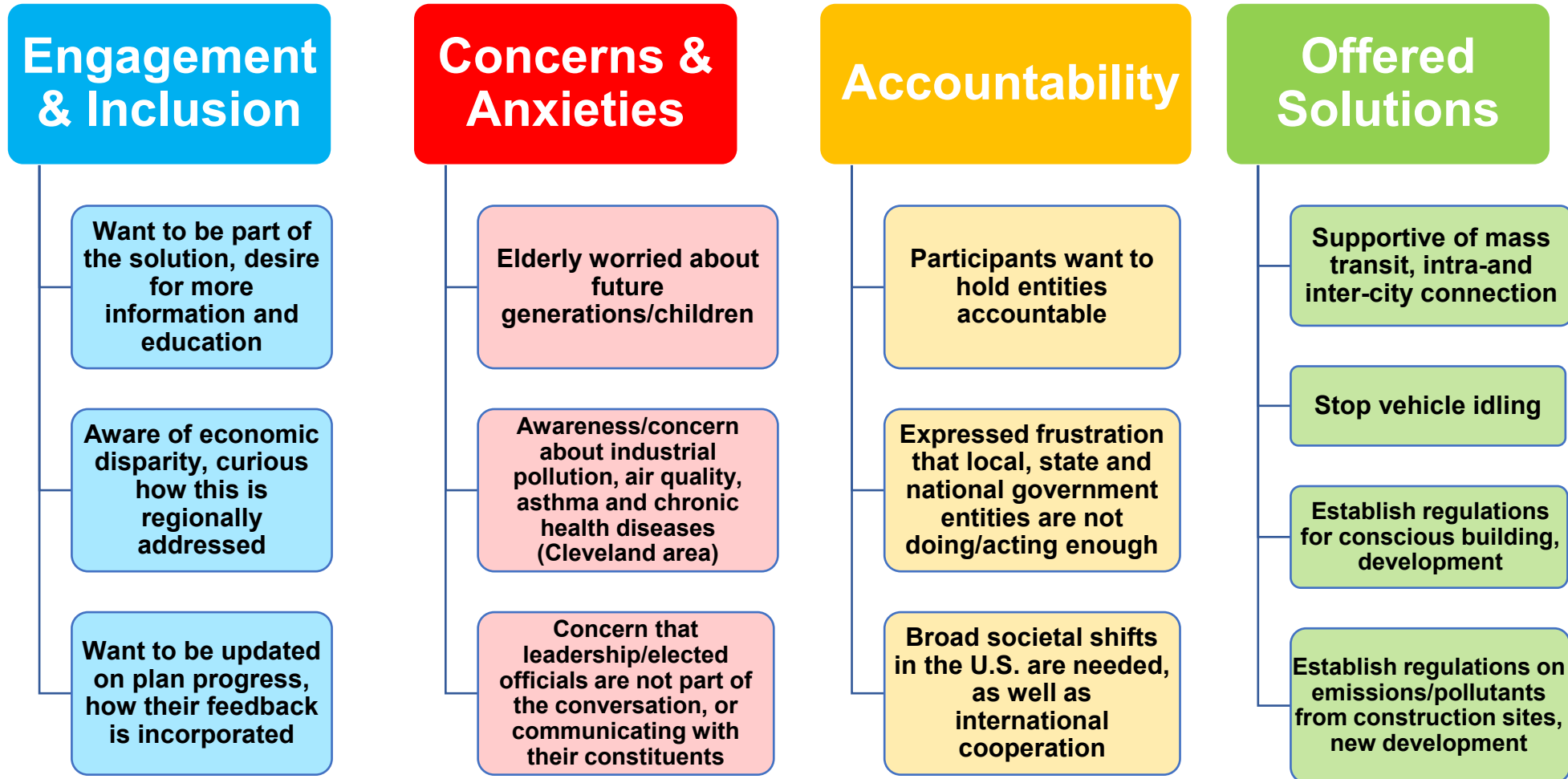
Lorain County Metroparks,
Lorain County

Jenkins Place Center, Olmsted
Township, Cuyahoga County



BACKGROUND

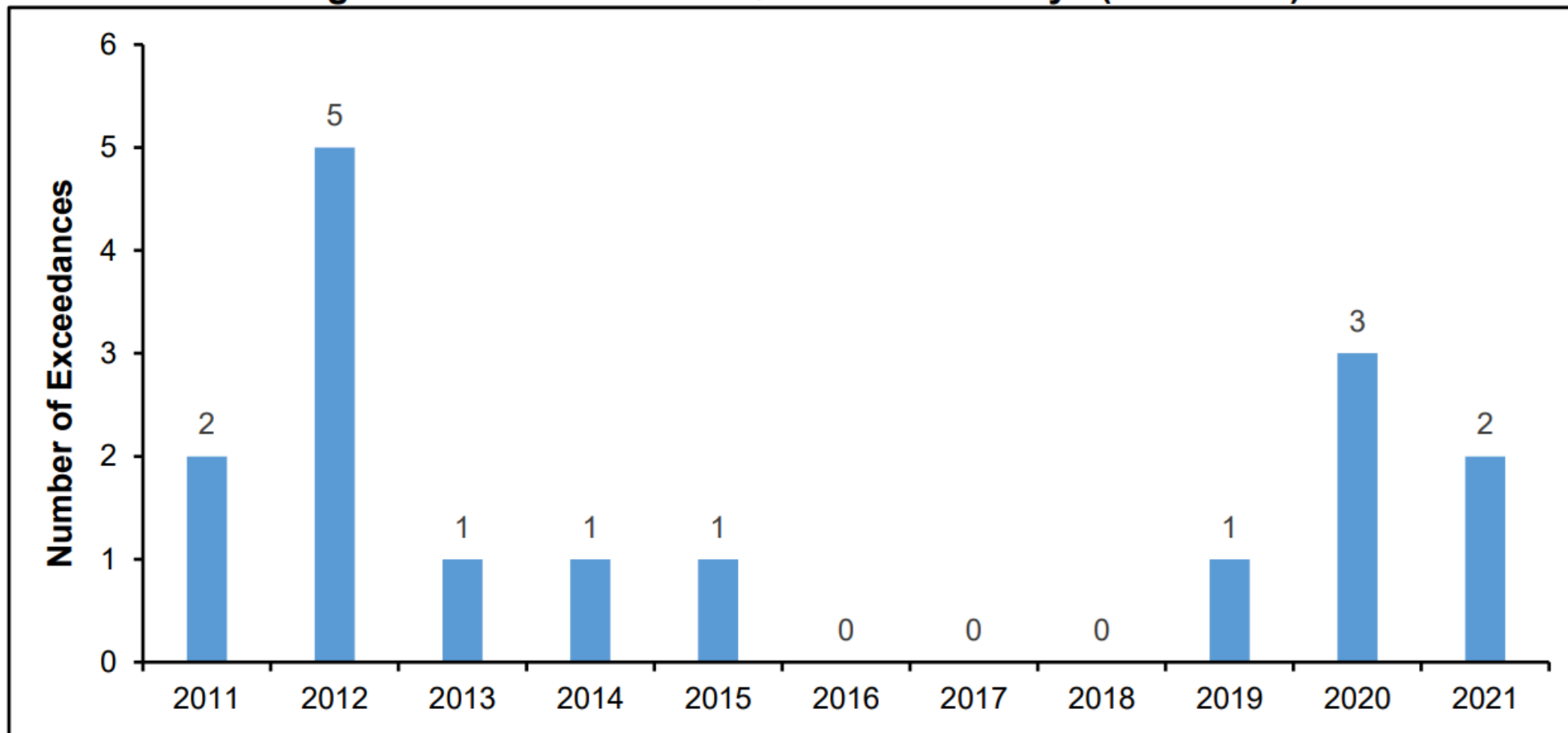
• Climate Fresk Participant Input – Key Takeaways



Air Quality

#1
concern in public
engagement

Figure 19: Number of PM_{2.5} Exceedance Days (2011-2021)

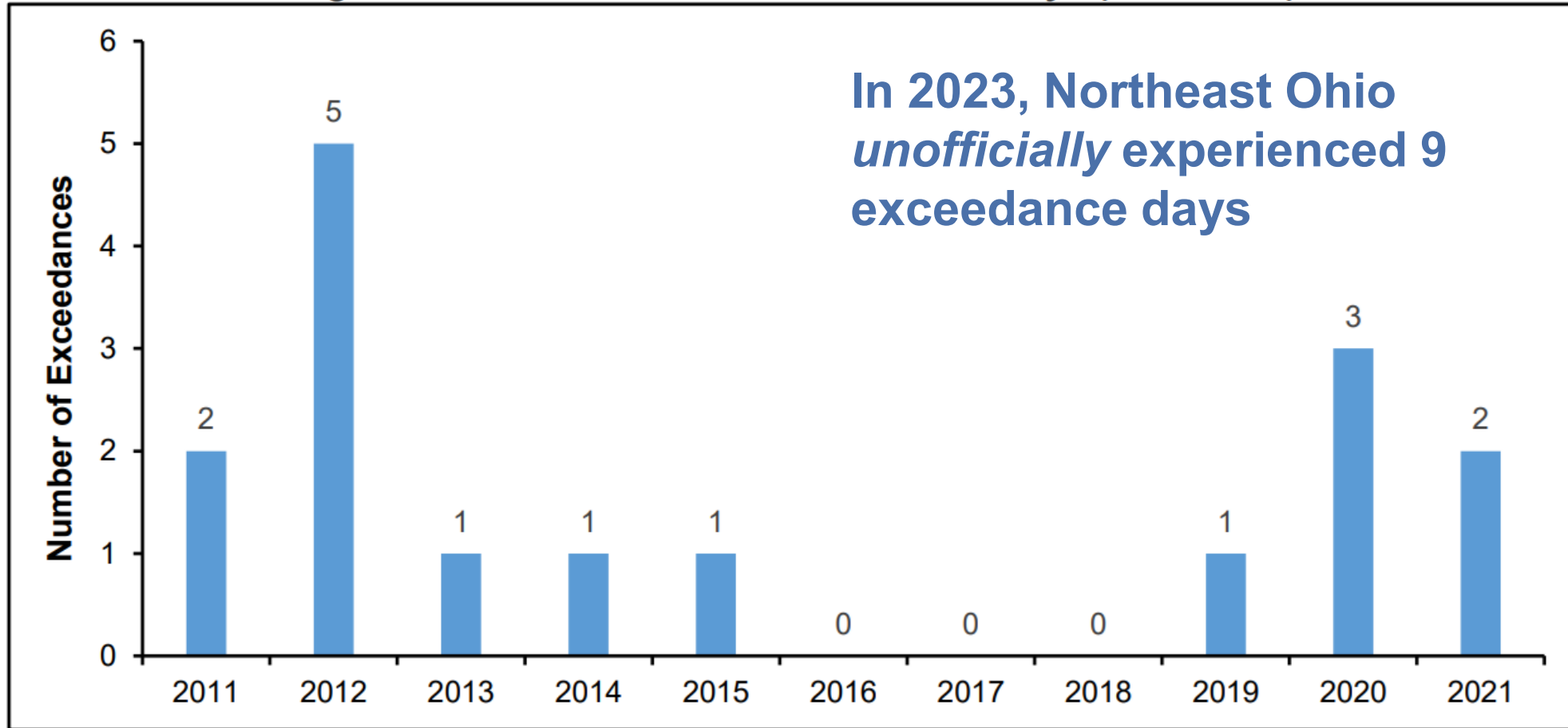


Source: U.S. EPA, “Air Quality System” data, <https://www.epa.gov/aqs> (accessed February 15, 2023).



Air Quality

Figure 19: Number of PM_{2.5} Exceedance Days (2011-2021)



In 2023, Northeast Ohio *unofficially* experienced 9 exceedance days

9

2023

Source: U.S. EPA, "Air Quality System" data, <https://www.epa.gov/aqs> (accessed February 15, 2023).



Air Quality and Health

WILDFIRE POLLUTION HARMS HEALTH

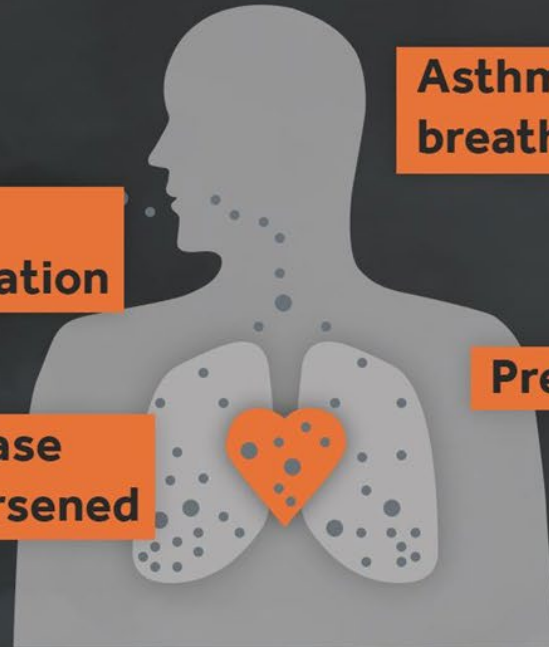
Fine particle (PM_{2.5}) effects

Eye, lung,
throat irritation

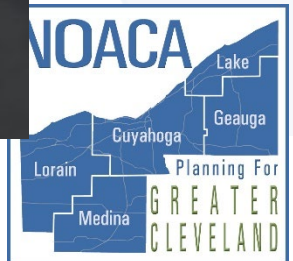
Heart disease
effects worsened

Asthma attacks,
breathing problems

Premature death



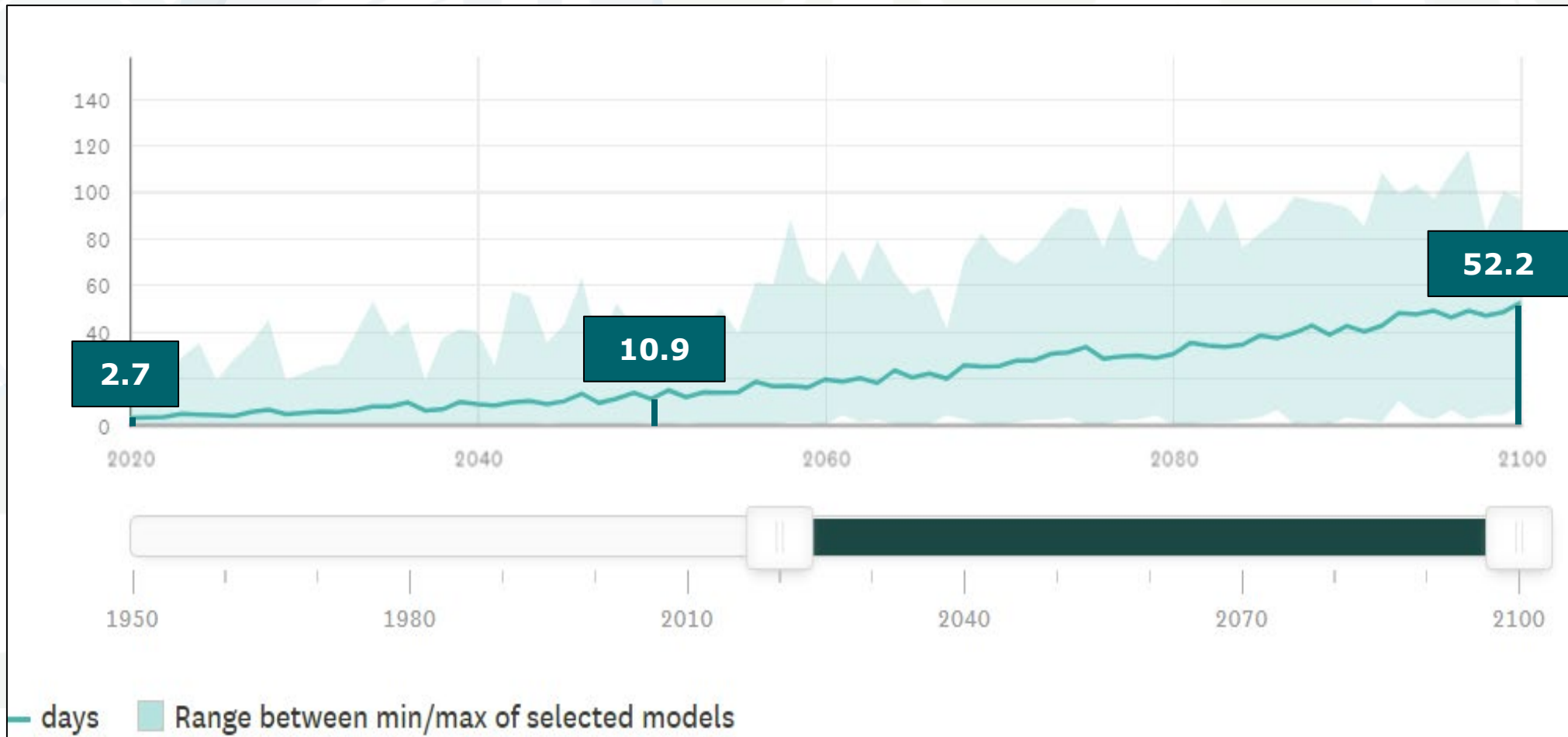
CLIMATE  CENTRAL



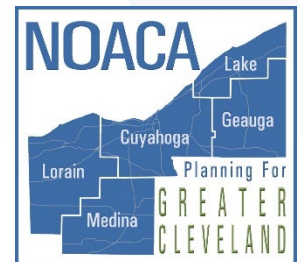
Extreme Heat

#2
concern in public
engagement

Number of days/year with temps $\geq 95^{\circ}\text{F}$



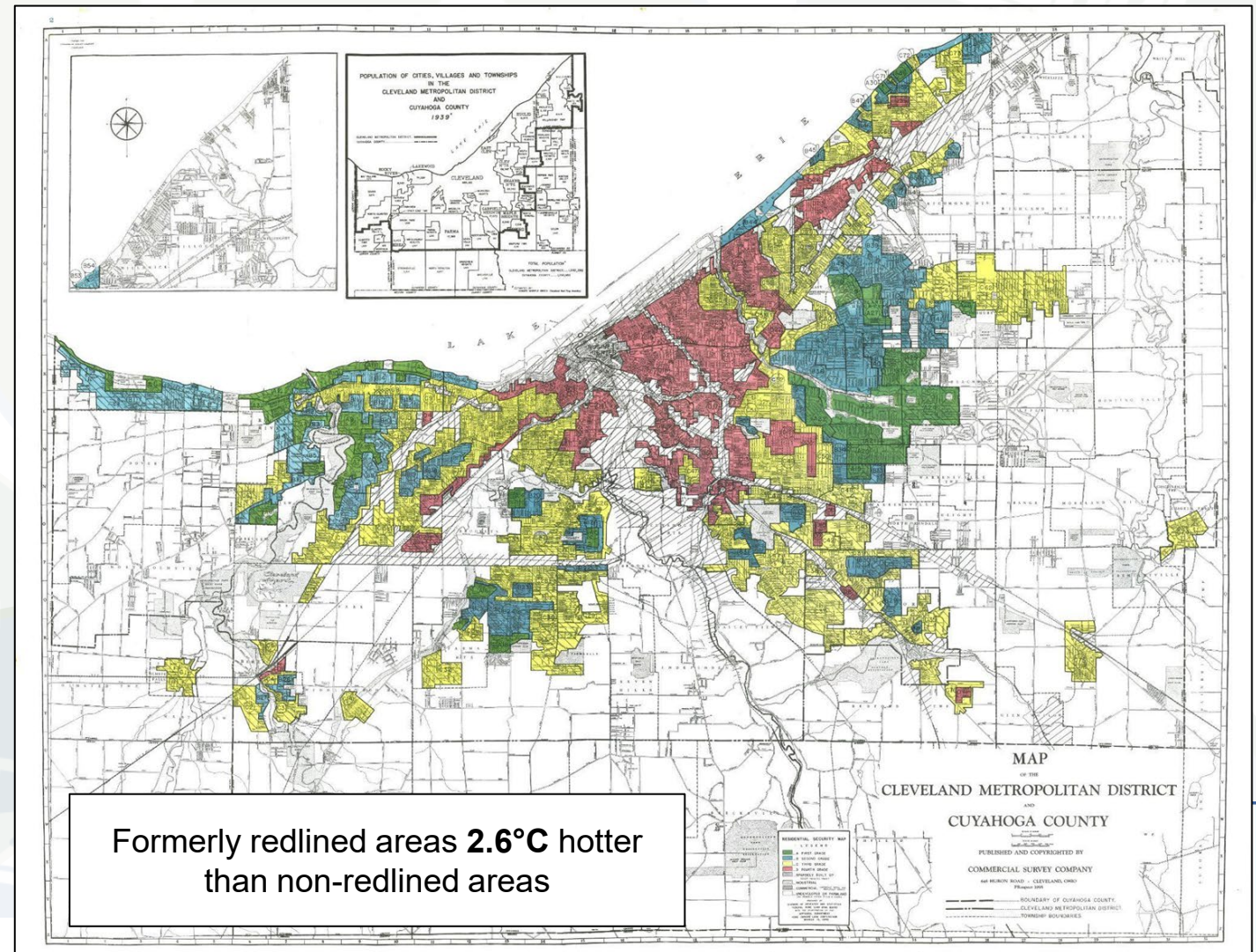
Hot Days: Projections for the number of days per year when the temperature is 95°F or hotter in the NOACA region (Temperate.io)



Extreme Heat: Regional Impacts

Public Health & Wellness

- **Disproportionate impacts on vulnerable groups**, including children, older adults and people who have medical conditions
- People are exposed because of **where they live or work**:
 - Formerly redlined communities
 - People who don't have A/C, unhoused people
 - Outdoor workers, e.g. agricultural, construction jobs

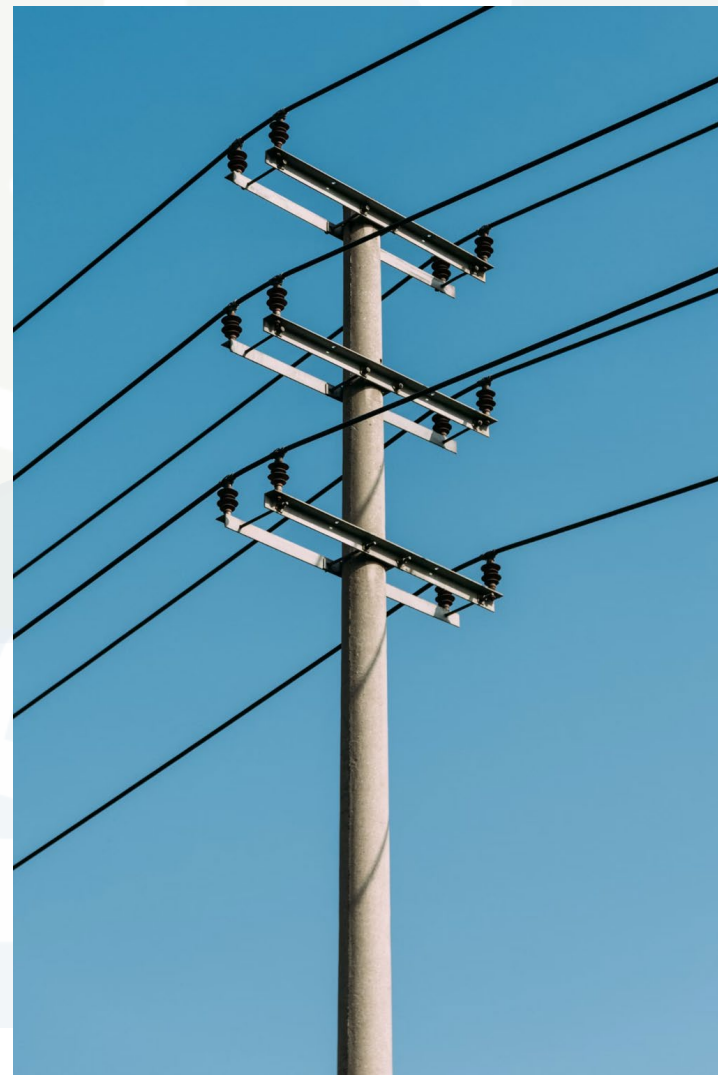


Redlining Map: Cleveland Metropolitan District and Cuyahoga County Home Owners' Loan Corporation (HOLC) map.

Extreme Heat: Regional Impacts

Energy Systems

- Rolling blackouts, power rotation, with disproportionate impacts on communities of color reported
- Areas with older infrastructure face power rotation
- **Costs:** A/C cost, health, lost revenue for businesses



Extreme Heat: Regional Impacts



[2019 Algal Blooms in Lake Erie](#) (NOAA) Image credit: Zachary Haslick, Aerial Associates Photography Inc.

Water & Wastewater Management

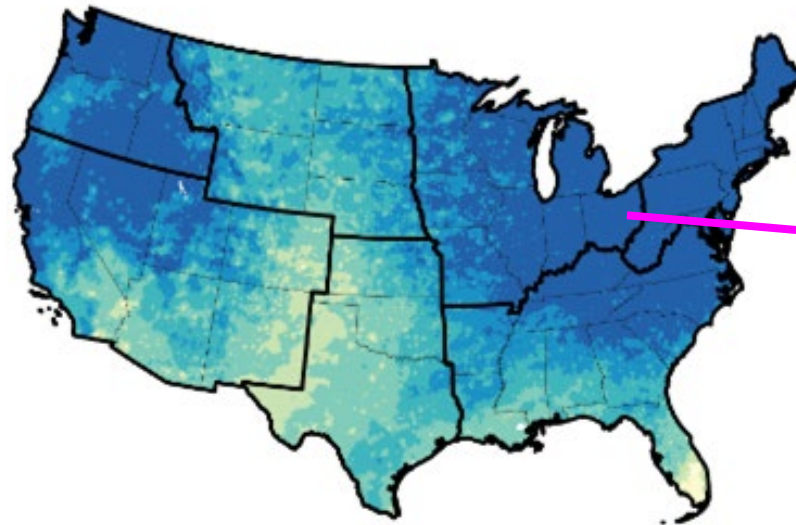
- Lower water levels, higher water temps in Lake Erie
- Favors harmful algal blooms (HABs)
- Reduced groundwater recharge



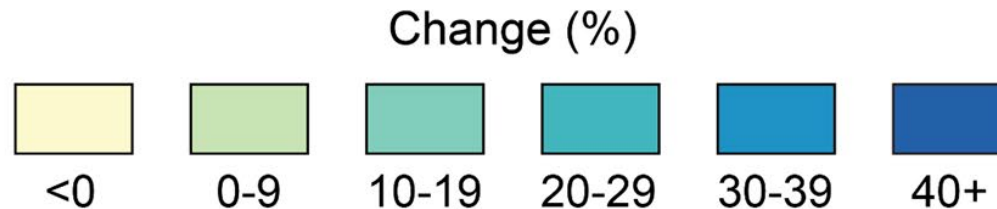
Heavy Precipitation and Flooding

Projected Change in Total Annual Precipitation
Falling in the Heaviest 1% of Events by Late 21st Century

#3
concern in public
engagement



**>40% increase
projected in Ohio**



Precip & Flooding: Regional Impacts

Water & Wastewater Management

- Infrastructure is **outdated**, short staffed
- Distribution/collection infrastructure (e.g. pipes, storm drains, culverts) and treatment facilities are particularly vulnerable
- **Vulnerable communities:** Urban residents; rural communities that rely on wells, Amish communities

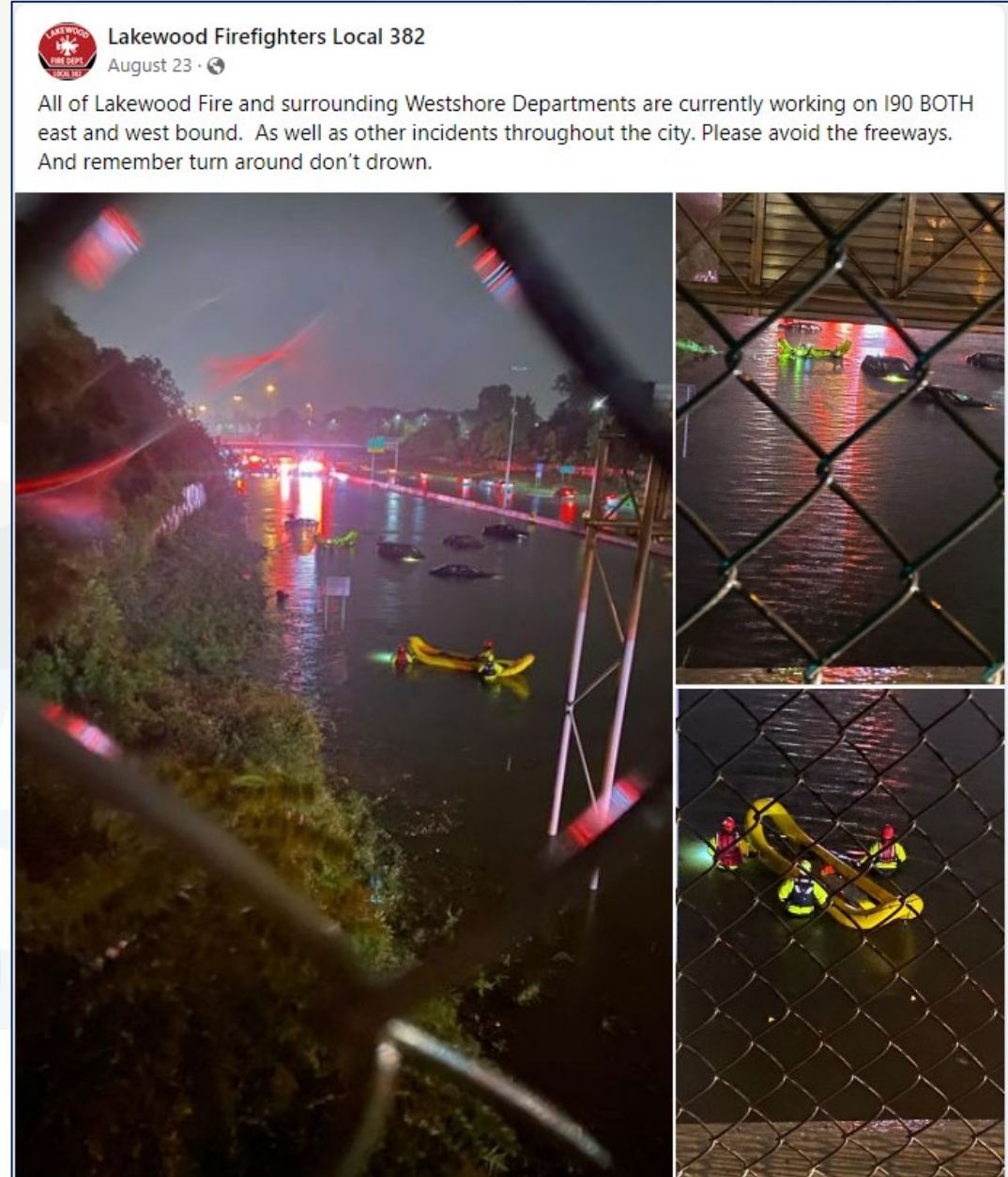


20 Most Vulnerable Culverts in Ohio (2016): Each numbered red circle is a culvert. *ODOT Infrastructure Resiliency Plan.*

Precip & Flooding: Regional Impacts

Transportation Systems

- Roads and highways, bridges, and public transit already face flooding in today's heavy rainfall events.
- Increased flooding of rail lines and transit hubs
- Damage to vehicles, flooding at EV charging stations is a safety concern



Precip & Flooding: Regional Impacts

Ecological Systems

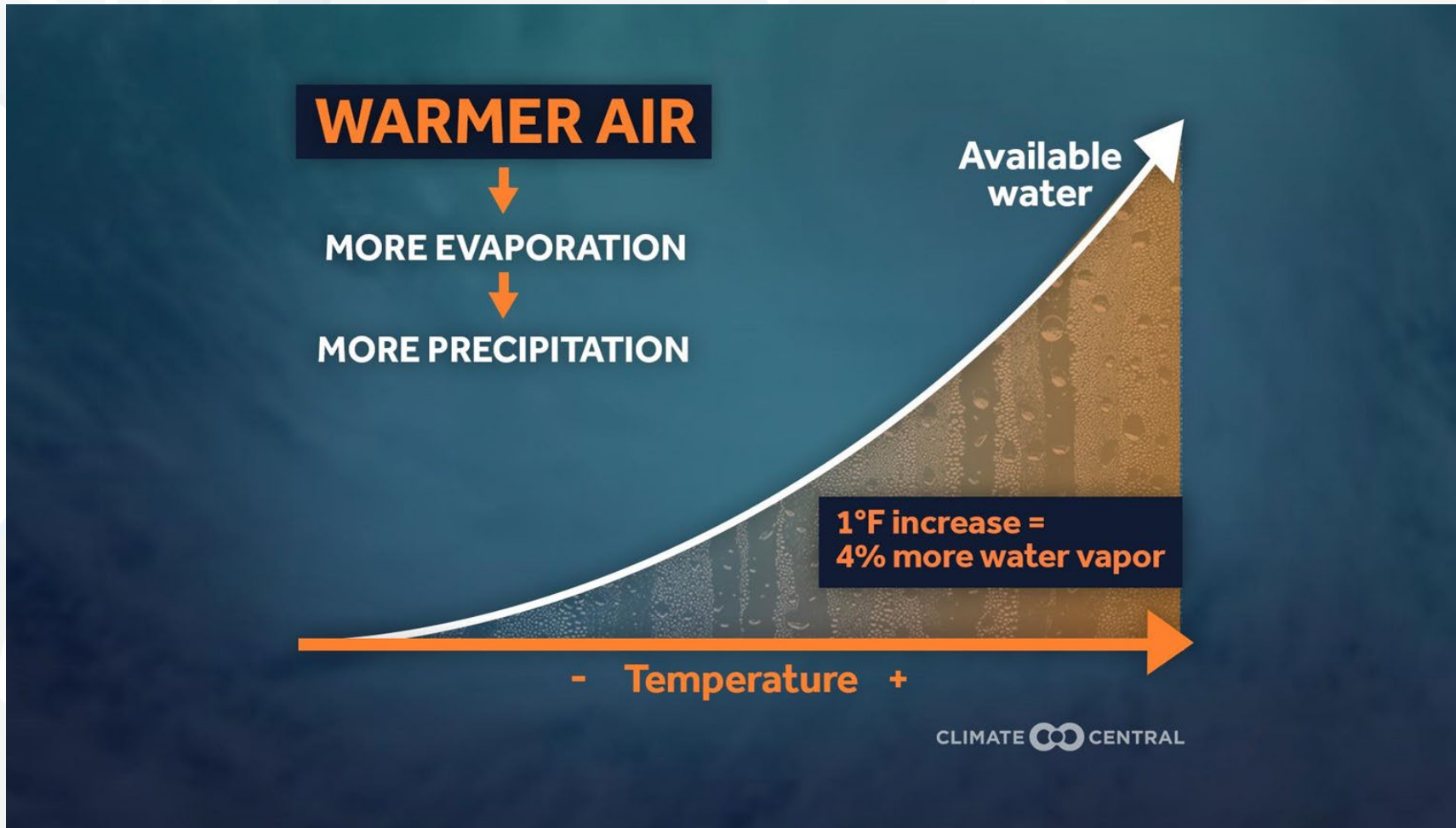
- Altered stream courses
- Nutrients promote Harmful Algal Blooms (HABs)
- Water contamination threatens wildlife health, human use of water bodies
- Flooding and erosion threaten ecosystem services, including flood mitigation, water purification, and wildlife habitat



2011 Algal Blooms in Lake Erie: Blooms concentrated in the western basin (NOAA)

Severe Summer Storms

#5
concern in public
engagement



It is likely that severe storm activity in the Midwest will become more intense as temperatures rise



Storms: Regional Impacts

Public Health & Wellness

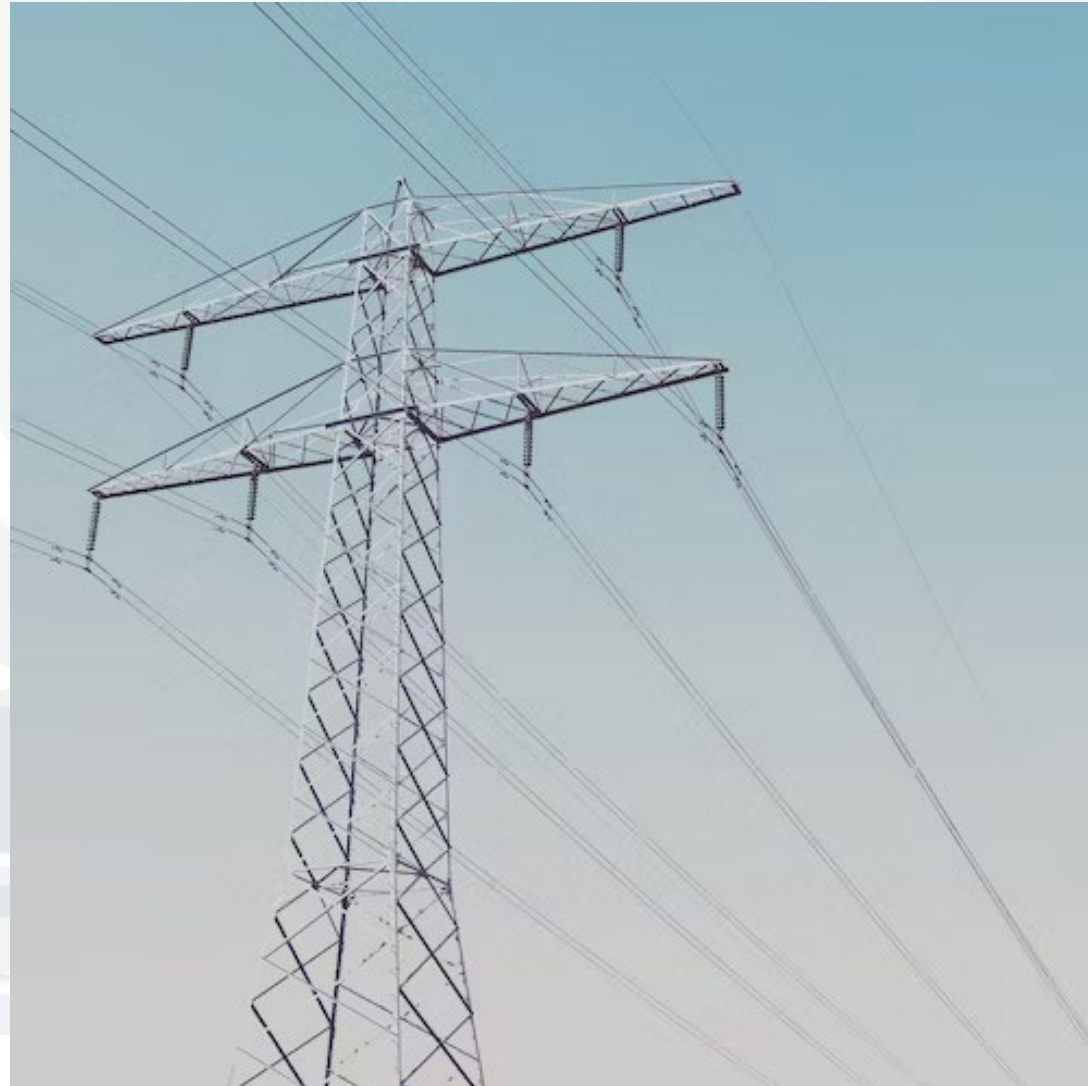
- People may underestimate risk
- Need to assist those at increased risk (nursing home residents, unhoused people, people with disabilities)
- Damage to homes, particularly substandard housing



Storms: Regional Impacts

Energy Systems

- Above-ground power lines, transformers, transmission lines can be damaged by strong winds, trees, debris
- Outages threaten health and cause community disruption



Storms: Regional Impacts



Transportation

- Debris, downed trees, utility polls, other road blockages compromise road safety and cause delays
- Dangerous driving conditions
- Public transit users are exposed

Discussion: CRVA Results and Implications for the Region

Three, 20-minute rounds of discussion followed by facilitator report out

Table Options:

- 1) Extreme Heat
- 2) Heavy Precipitation and Flooding
- 3) Severe Summer Storms
- 4) Air Quality

ROUND 1

11:20 – 11:40 AM (20 minutes)

ROUND 2

11:40 AM – 12:00 PM (20 minutes)

ROUND 3

12:00 – 12:20 PM (20 minutes)

Report Out

Agenda

Morning Session

9:00 – 9:20 AM	Welcome
9:20 – 10:15 AM	Regional visioning warm-up activity
10:15 – 10:25 AM	Break
10:25 AM – 12:30 PM	Introduction to adaptation and NOACA's regional CRVA; small group discussions of CRVA results
12:30 – 1:00 PM	Lunch Break

Afternoon Session

1:00 – 1:40 PM	Presentation on adaptation funding, goals, and actions
1:40 – 3:55 PM	Ranking regional adaptation actions ranking activity (includes a 10-minute break)
3:55 – 4:15 PM	Participant commitments and workshop close-out



Before Seeking Funding...

- Determine the size and scope of your financial need
- Understand state and local regulations (such as local procurement policies)
- Inventory your existing funding options
- Consider any implementation partners on private land
- Have resilience plans and strategies prepared
- Brainstorm co-benefits

Federal Assistance

- **Grants**
 - **Formula**
 - **Competitive**
- **Loans**
 - **Ex. Water Infrastructure Finance Innovation Act: long-term, low-interest loans or loan guarantees to a wide variety of water infrastructure projects**

Major Federal Grants for Resilience

FEMA

Flood Mitigation Assistance Grant Program

Hazard Mitigation Assistance Grants

Pre-Disaster Mitigation (PDM) Grant Program

Building Resilient Infrastructure and Communities (BRIC)

FHWA

- Promoting Resilient Operations for Transformative, Efficient, and Cost Saving Transportation (PROTECT)

For Great Lakes coastal resilience: GLRI, USFS, NOAA, NFWF have many grants available for near-shore projects



CEJST and Justice 40

- **Justice 40 is an initiative designed to direct 40% of benefits from certain federal programs to disadvantaged communities**
- **A list of eligible programs can be found [here](#)**
 - These include major FEMA grants like BRIC and Flood Mitigation Assistance
 - Also applies to State Revolving Funds
- **Disadvantaged areas can be identified using the Climate and Economic Justice Screening Tool (CEJST)**
- **If your project falls within a disadvantaged area:**
 - It may be prioritized for funding
 - Match requirements may be reduced or waived
- **Always be sure to check CEJST before applying for federal funding**
 - Even for non-Justice40 eligible programs, it can be used to strengthen grant applications

Leveraging Other Grant Programs for Resilience

- Many grant programs are not specifically for climate resilience but can be used for resilience projects
 - Climate change mitigation programs often allow for resilience actions to be included
 - CPRG implementation [NOFO](#) encourages projects to be designed with resilience co-benefits
 - Environmental conservation and outdoor recreation grants
 - [Community Development Block Grants](#) for disaster mitigation
- Longer-standing grant programs relating to environmental quality, flood and stormwater management, drinking water, etc often allow for these funds to be used for resilience projects
- Resilience projects have many co-benefits - keep this in mind when seeking funding
 - You may be able to combine funding from multiple grants to cover larger projects

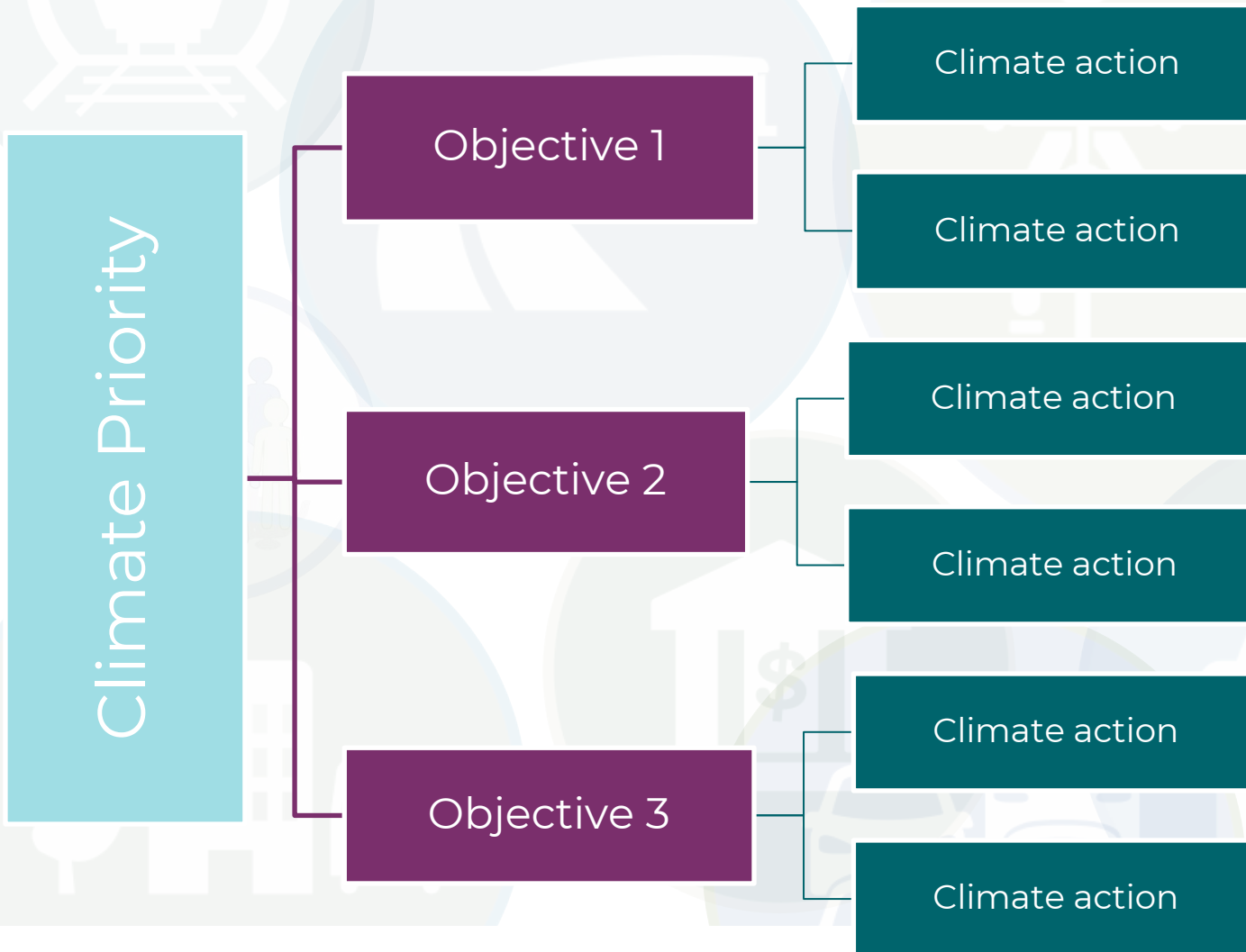
Regional, State, and Local Assistance

- **State Revolving Funds**
 - Clean Water and Drinking Water SRFs can be leveraged to fund resilience projects
- **Ohio Coastal Management Program** and **other ODNR grants**
- **In lieu of or in order to match grant funding, other financing options may be available including:**
 - General fund appropriations
 - Utility fees or enterprise funds
 - Special purpose districts
 - Market-based delivery and finance options
 - Public-private partnerships

IIJA, IRA, and Other Federal Funding Sources Will Continue to be Announced

- **There are a number of resources that can help you track and understand upcoming funding opportunities:**
 - [IIJA and IRA Funding Tracker](#)
 - [American Flood Coalition Flood Funding Finder](#)
 - EPA Region 5's Environmental Finance Center (EFC) for Water Infrastructure
 - [Funding Opportunities: US Climate Resilience Toolkit](#)
 - [2023-2024 Federal Grant Funding Calendar](#)

From Priorities to Action



Objectives (or Goals) answer the question: What are we trying to achieve with our Plan?

Actions answer the question: How are we going to achieve this goal/objective?

Climate Adaptation Actions

Reduce Exposure

Help people & infrastructure get out of harm's way



Relocate critical infrastructure

Reduce Sensitivity

Harden against potential damage



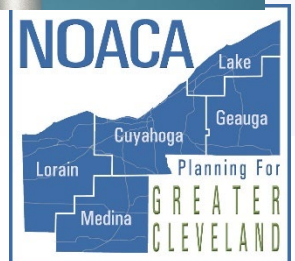
Build a flood wall

Increase Capacity

to respond, prepare, adapt, and adjust



Early warning systems, neighborhood assistance networks



Types of Adaptation Actions

- **Building resilience can take many forms:**
 - Research and monitoring
 - Early warning systems
 - Hazard information provision
 - Awareness raising and education
 - Operations and practices
 - Laws, policies or plans
 - Infrastructure (hard and soft)
 - Economic instruments (rebates, incentives, and taxes)
 - Partnerships
 - Supporting existing plans
 - Conservation

“Co-Benefits” of Adaptation

The added benefits of climate action; when actions simultaneously help us meet multiple objectives

“Co-Benefits” of Adaptation

**More Mitigation Measures,
More Savings**



**One dollar invested in mitigation =
13 dollars U.S. saves in future costs**



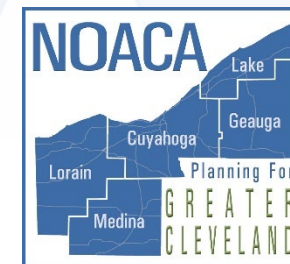
**Cost savings for
government,
residents,
businesses**



**Public health
and wellbeing**



**Natural spaces
for us & future
generations**



“Co-Benefits” of Adaptation



Ecosystems & biodiversity



Property values & development



Equitable & resilient communities



NOACA Workstreams

Resilient People

- Prepare Northeast Ohio's residents and institutions for the impacts of a changing climate
- Strengthen the adaptive capacity of vulnerable communities
- Equity and inclusion for disproportionately impacted communities
- Local partnerships for clean energy jobs
- Facilitate regional policy changes and promote sustainability through effective lobbying efforts and collaboration



NOACA Workstreams

Resilient Environment

- Expand and protect natural carbon capture and sequestration
- Expand green infrastructure for stormwater management
- Make environmental improvements that promote climate resiliency for people
- Resilient lakefront



Ranking Adaptation Actions

To help the region work toward these goals, **both workstreams proposed a list of adaptation actions** for inclusion in the regional CAP

Activity: Ranking Adaptation Actions

- Work others at your table – three 40-minute rounds
- Discuss each action and rate based on **co-benefits** and **feasibility**
- Once all actions rated, each table to choose **5 priority actions** for the region (consider your ratings!)

Rankings:

Worksheet



Resilient People Actions				
Action	Potential Implementers	Co-Benefits?	Feasibility?	Justification, Comments, Questions
Identify air pollution hotspots to target for interventions	Local gov'ts, air quality management districts, universities, Ohio EPA, nonprofits			
Provide resources to households and small businesses to support emergency preparedness	GCP, Chambers, emergency management agencies, PUCO, FEMA			
Provide engagement opportunities with elected and public officials on climate change and disaster resilience (e.g. listening sessions, resident advisory committees)	Local gov'ts, NOACA, GCP, nonprofits			
Establish a community-led process to identify and rectify the impacts of past discriminatory policies, and allocate resources for equitable development	Local gov'ts, community development corps			
Establish and integrate existing community-based early warning and response systems across the region to provide timely information about hazards like storms and flooding	Local gov'ts, emergency management agencies, Ohio Committee for Severe Weather Awareness			





After completing your worksheet, each table uses their 5 blue stickers to choose their top 5 priority actions for the region

H

M

L

Resilient People Actions

Action	Potential Implementers	Co-Benefits?	Feasibility?	Justification, Comments, Questions
Identify air pollution hotspots to target for interventions	Local gov'ts, air quality management districts, universities, Ohio EPA, nonprofits			Action has some co-benefits (health, equity) and easy to implement
Provide resources to households and small businesses to support emergency preparedness	GCP, Chambers, emergency management agencies, PUCO, FEMA			Very expensive and difficult to implement
Provide engagement opportunities with elected and public officials on climate change and disaster resilience (e.g. listening sessions, resident advisory committees)	Local gov'ts, NOACA, GCP, nonprofits			
Establish a community-led process to identify and rectify the impacts of past discriminatory policies, and allocate resources for equitable development	Local gov'ts, community development corps			
Establish and integrate existing community-based early warning and response systems across the region to provide timely information about hazards like storms and flooding	Local gov'ts, emergency management agencies, Ohio Committee for Severe Weather Awareness			

ROUND 1: Resilient People

1:40 – 2:20 PM (40 minutes)

ROUND 2: Resilient Environment

2:20 – 3:00 PM (40 minutes)

ROUND 3: Resilient Infrastructure & Built Environment

3:10 – 3:50 PM (40 minutes)



Commitments

Share **2 actions** that you can commit to implementing **at home**

&

2 actions that you most support for the **region**

Thank you!

See you tomorrow for the emissions reduction workshop!



NORTHEAST OHIO



AREAWIDE
COORDINATING
AGENCY

NOACA: Planning For Greater Cleveland

NOACA will **STRENGTHEN** regional cohesion, **PRESERVE** existing infrastructure, and **BUILD** a sustainable multimodal transportation system to **SUPPORT** economic development and **ENHANCE** quality of life in Northeast Ohio.

